



IMT Atlantique

Bretagne-Pays de la Loire
École Mines-Télécom



**CONTRÔLES
NON DESTRUCTIFS
ET
ANALYSES PAR
FAISCEAUX D'IONS**

Vincent Métivier | Journée technique PRECEND | 23 nov. 2017

+ Ondes mécaniques

× Acoustique, ultrasons,...

+ Flux thermiques

+ Électromagnétiques

× Courants

× Radar

× THz

× Optique (IR, visible)

× RX

× Gamma

+ Neutrons*

+ Particules

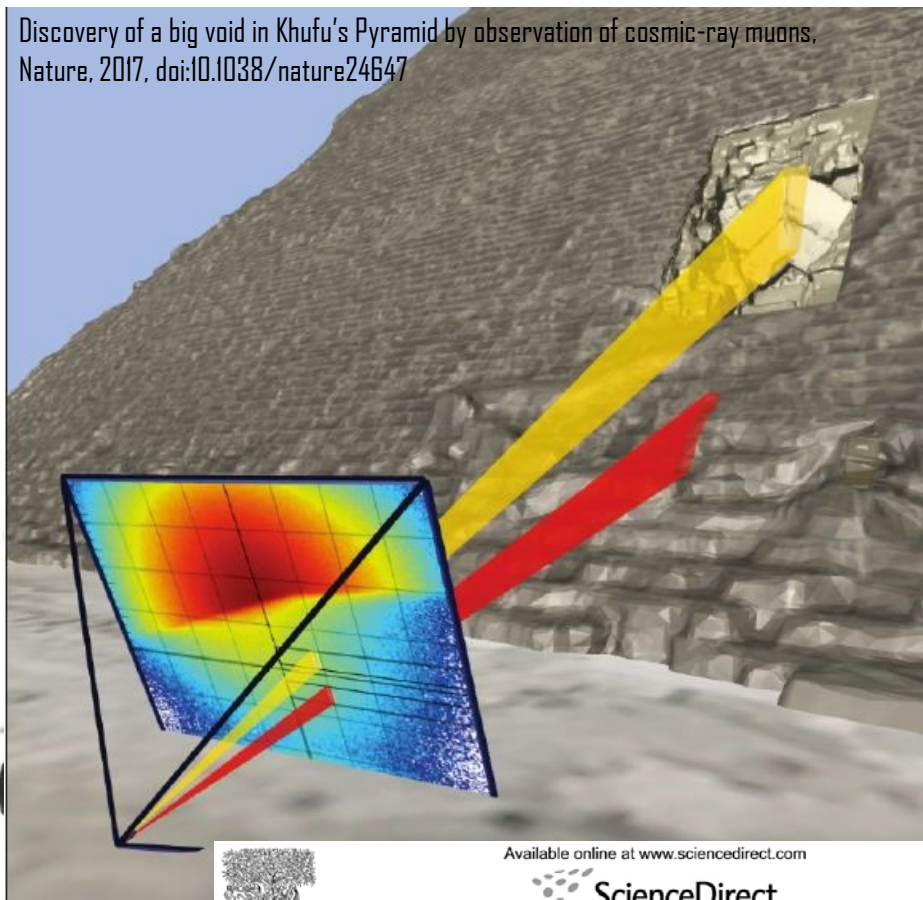
× Électrons

× Positrons

× Muons cosmiques

+ Ions

RAYONNEMENTS IONISANTS



Discovery of a big void in Khufu's Pyramid by observation of cosmic-ray muons, Nature, 2017, doi:10.1038/nature24647



Available online at www.sciencedirect.com



Nuclear Instruments and Methods in Physics Research B 263 (2007) 317–319



www.elsevier.com/locate/nimb

Muon radiography of large industrial structures

W.B. Gilboy ^{a,*}, P.M. Jenneson ^a, S.J.R. Simons ^b, S.J. Stanley ^c, D. Rhodes ^c

^a Department of Physics, University of Surrey, Guildford, Surrey GU2 7XH, UK

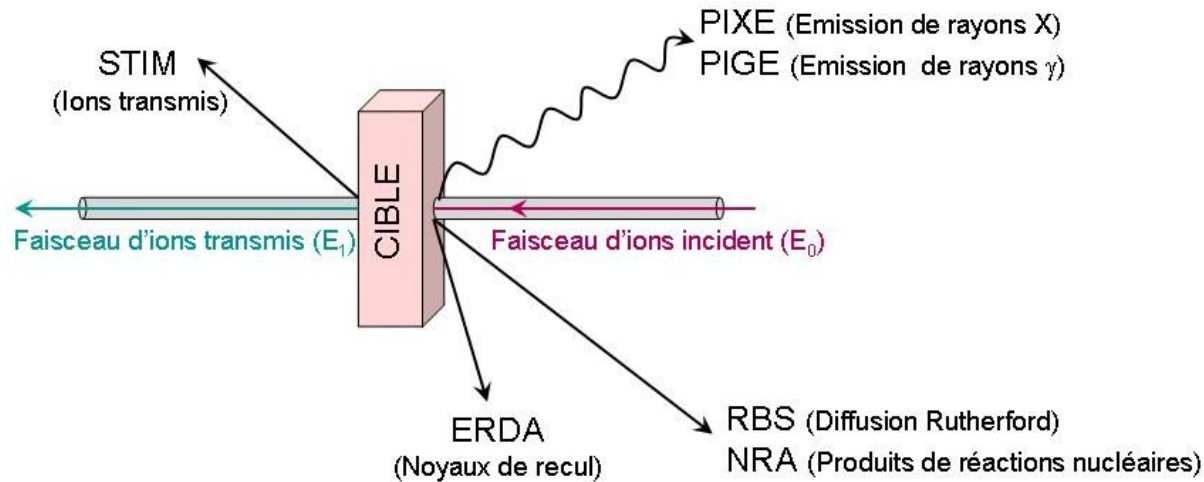
^b Department of Chemical Engineering, University College London, Torrington Place, London WC1E 7JE, UK

^c British Nuclear Fuels plc, Research and Technology, Sellafield, Seascale CA20 1PG, UK

3 Les analyses par faisceaux d'ions

+ Sonde électromagnétique (très ionisante)

+ Sonde nucléaire



analyse multiélémentaire

non destructive, à l'air
de l'ordre de la ppm ($\mu\text{g/g}$)
dans solides, poudres, liquides
matériaux « épais » ($\mu\text{m} \rightarrow \text{cm}$)

informations supplémentaires

densité
épaisseur
profil de concentration en profondeur
multicouches

Quelques applications

+ Art et archéologie

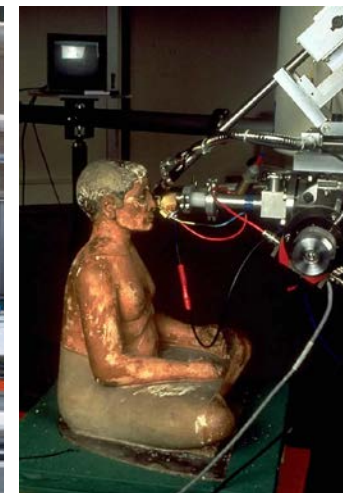
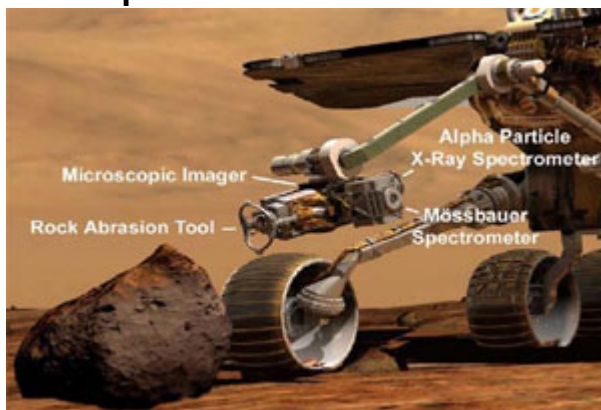
+ Géologie

+ Bio

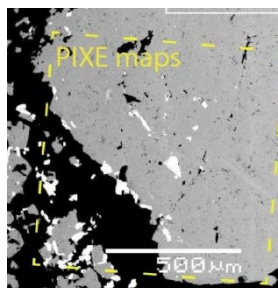
+ Environnement

+ ...

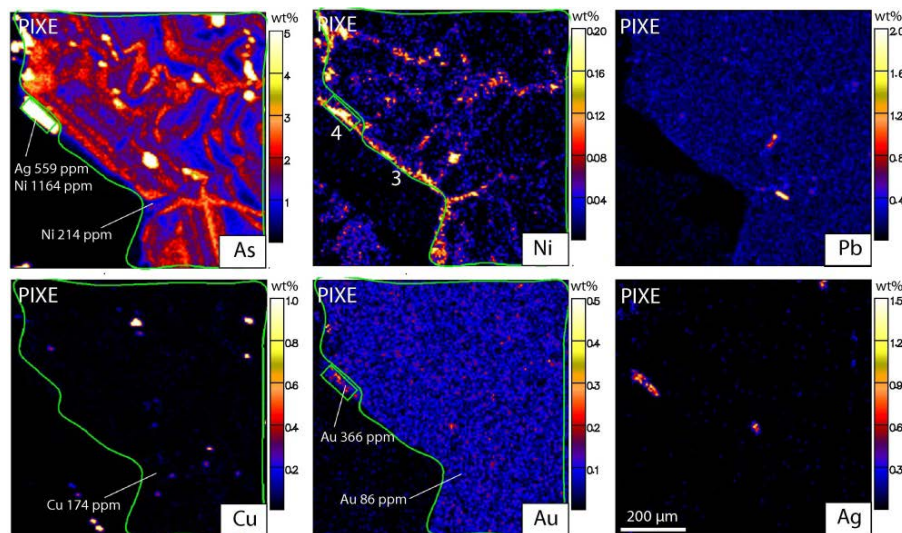
Mars Exploration Rover



AGLAE - C2RMF - Musée du Louvre



Imagerie PIXE



Quelques installations (en France)

+ Région parisienne

- × AGLAE (Louvre)
- × Orsay/Saclay

+ Bordeaux

- × AIFIRA

+ Lyon

- × ANAFIRE

+ Nantes

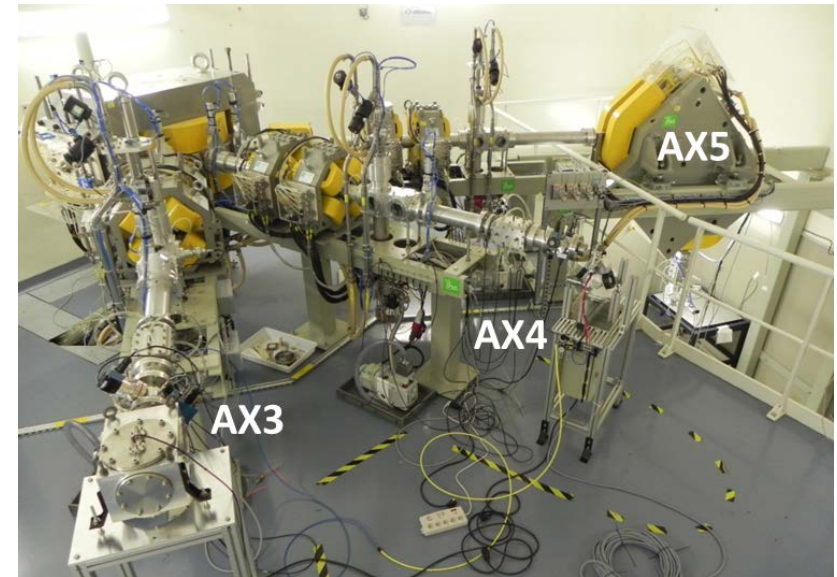
- × ARRONAX
 - Haute énergie
 - Unique en France



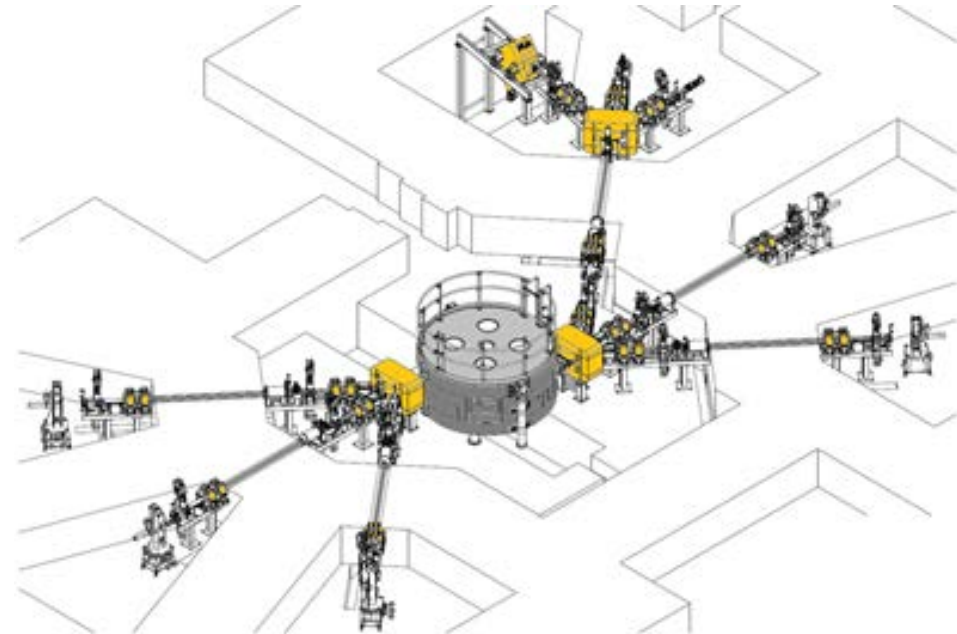
 ARRONAX



Extrated Beam	Accelerated Particle	Energy (MeV)	Intensity (μA)	Dual Beam
Proton	H ⁻	30 to 70	≤ 350	Yes
	HH ⁺	17	≤ 50	No
Deuteron	D ⁻	15-35	≤ 50	Yes
Alpha	He ²⁺	68	≤ 70	No

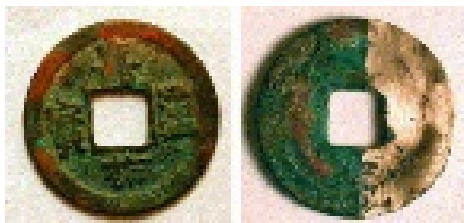


- + Production de radionucléides innovants pour la recherche en médecine nucléaire
- + Recherche sur l'interaction des rayonnements avec la matière inerte et vivante
- + Formation



PIXE à haute énergie

+ Travaux antérieurs (HZBerlin) :



Analyse d'une pièce de monnaie sous une couche de corrosion de 1 mm

A. Denker et al. Nucl. Instr. & Meth., 226, 2004

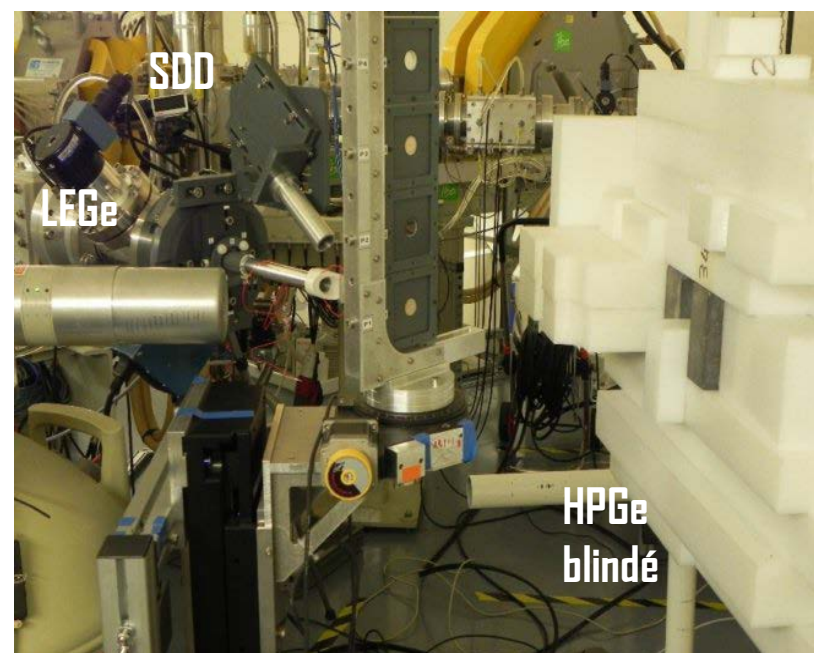


Détection en profondeur des éléments constituant les pigments d'un tableau

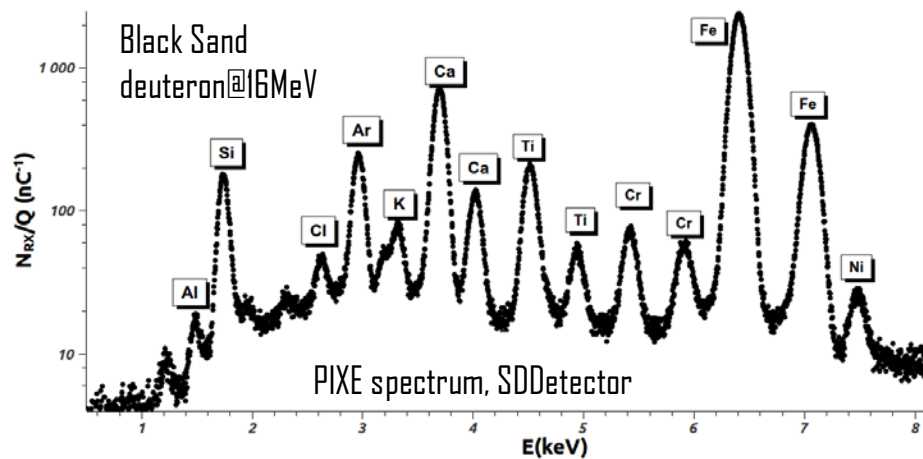
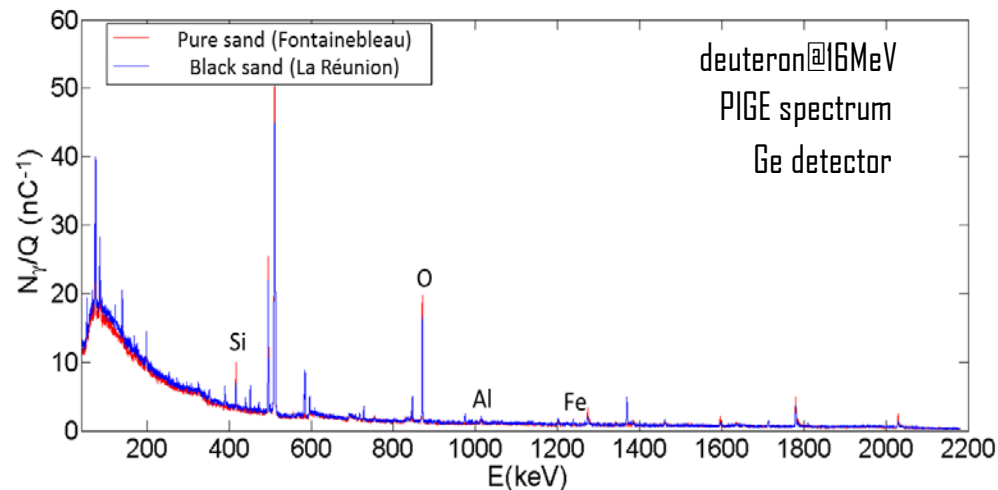
« Adoration of the Sheperd »
A. Denker et al.,
Nucl. Instr. & Meth., 213, 2004

+ À Arronax : p,d, α à 16-70 MeV

- × **protons** are selected for their **higher range** in matter
- × **Alpha particles** for their **higher sensitivity** (K X-ray production cross section)
- × low energy **deuterons** essentially for **PIGE**



+ Ex: volcanic sand analysis



Pure Sand from
Fontainebleau (ref.)

Volcanic Sand
from La Réunion



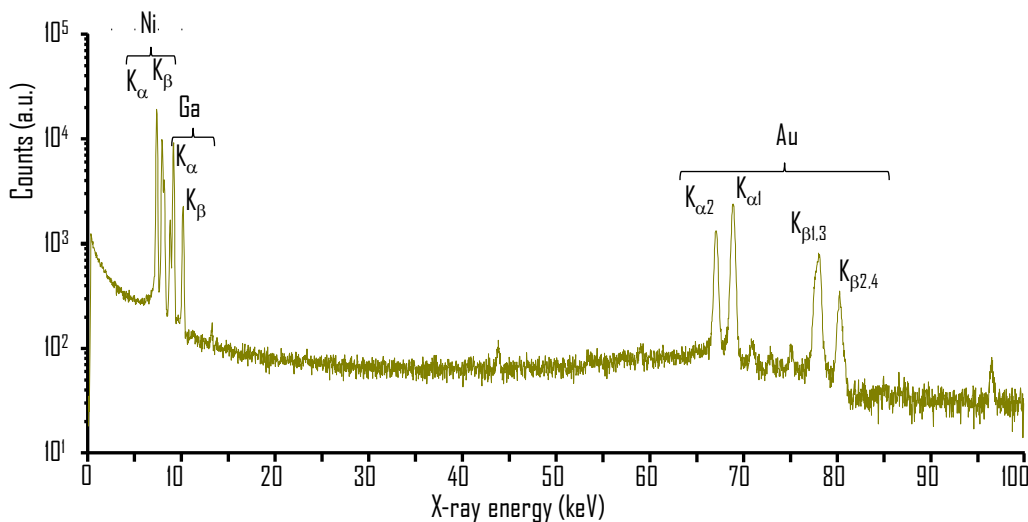
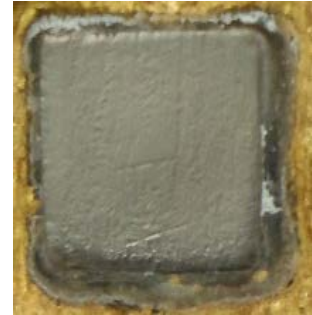
Iterative calculation

PIXE		PIGE	
Élément	$a_k(\%)$	Élément	$a_k(\%)$
O	$45,8 \pm 5,5$	O	$43 \pm 0,9$
Al	$11,4 \pm 1,4$	-	-
Si	$22,3 \pm 2,7$	Si	$21 \pm 1,3$
Ca	$5,75 \pm 0,69$	-	-
Ti	$1,60 \pm 0,2$	-	-
Cr	$0,41 \pm 0,05$	-	-
Mn	$0,29 \pm 0,03$	-	-
Fe	$11,9 \pm 1,4$	-	-
Ni	$0,16 \pm 0,02$	-	-

Thick sample analysis

+ Ex: Ni/Ga alloy electrodeposited on gold carrier

- × the mass fraction and the density of the Ni/Ga alloy are calculated through an iterative process based on the K X-ray intensities of Ni and Ga.
- × the thickness of the alloy is then determined thanks to the attenuation of the K X-ray coming from the gold carrier.



X-Ray spectrum from irradiation of a Ni/Ga alloy (on gold substrate) target with a 70 MeV proton beam (LEGe detector at 25 cm).

+ Mass fraction (wt%):

	HE PIXE	ICP-AES	SEM/EDX
Ni	34.81 ± 0.7	34.15 ± 0.4	34.04 ± 0.3
Ga	65.19 ± 0.8	65.85 ± 1.6	65.96 ± 1.3

+ thickness: **317 ± 32 μm**

+ density: **6.9 g.cm⁻³**

Multilayer analysis

C. Koumeir et al., *AIP Conf. Proc.* 1412, pp. 105-112

D. Ragheb et al., *J Radioanal Nucl Chem* (2014) 302:895-901

A. Subercaze et al., *ECAART12* (2016), NIMB, in press

Target 1		Target 2	
Element	Position	Element	Position
Titanium	1	Aluminium	1
Silver	2	Titanium	2
Gold	3	Aluminium	3
-	-	Silver	4

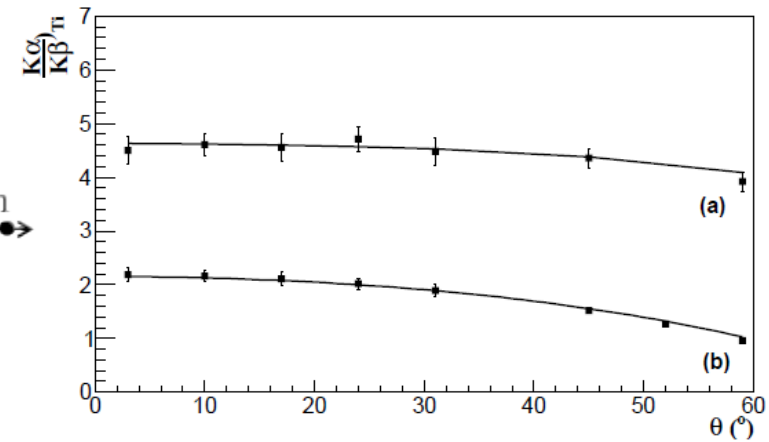
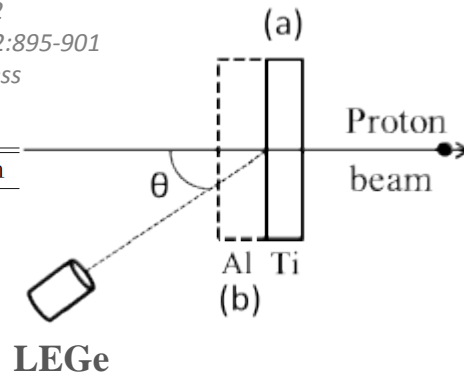
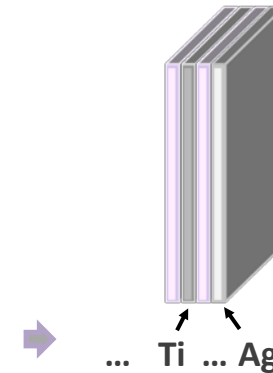


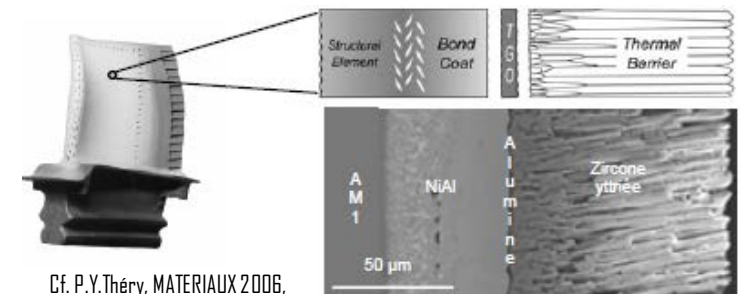
Table 3: Results of the multi-layers analysis using detection angles of 3° and 45°
Target 1

Element	$(\Delta\mu \cdot d)'$	Calculated thickness (μm)	Calibrated thickness (μm)
Titanium	92 ± 6	10.40 ± 0.62	10.03 ± 0.02
Silver	860 ± 40	25.82 ± 1.29	24.87 ± 0.04
Gold	12200 ± 600	9.11 ± 0.59	10.74 ± 0.02

Target 2			
Element	$(\Delta\mu \cdot d)'$	Calculated thickness (μm)	Calibrated thickness (μm)
Titanium	664 ± 62	9.25 ± 0.93	10.06 ± 0.02
Silver	4168 ± 348	10.33 ± 0.21	10.32 ± 0.02

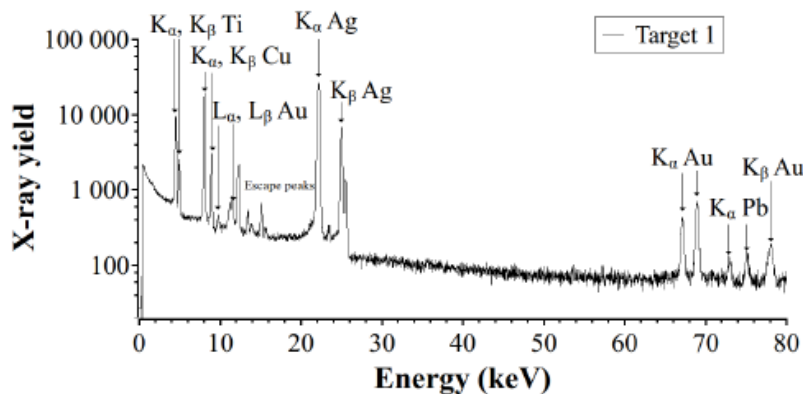


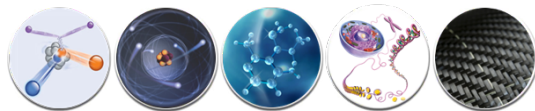
+ Applications potentielles :



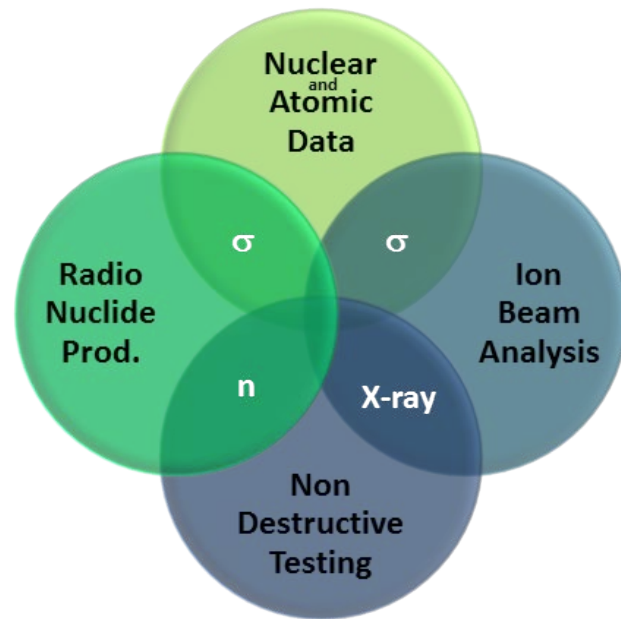
Cf. P.Y.Théry, *MATERIAUX* 2006.

Etude de l'adhérence des systèmes barrière thermique pour aube de turbine.





Physics of Radiation Interactions with Matter and Applications



+ Basic and Applied Research

+ In the scope of two main issues with major societal impact:

- × Health (cancer, cardiovascular disease, etc.)
- × Integrity and reliability of structures (transport, energy, etc.)

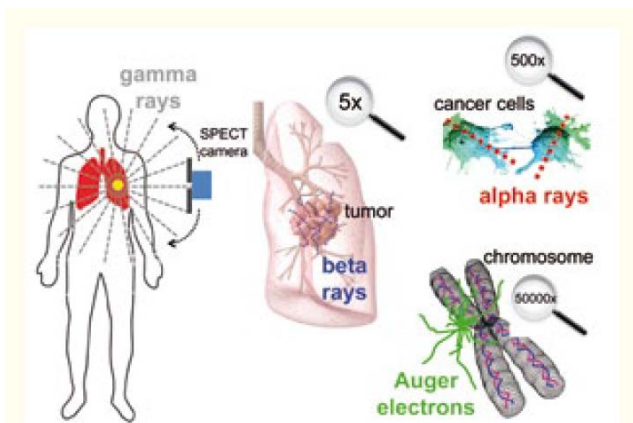
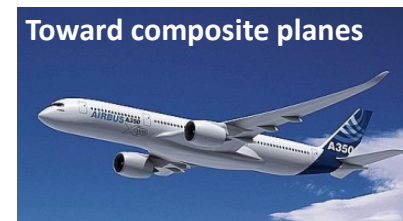


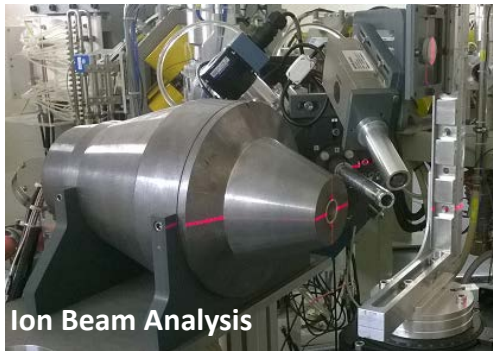
Figure 1.1. The alphabet of ionising radiation, with ranges varying from nanometres to decimetres in the human body.

from Nuclear Physics for Medicine (NuPEEC report, 2014)

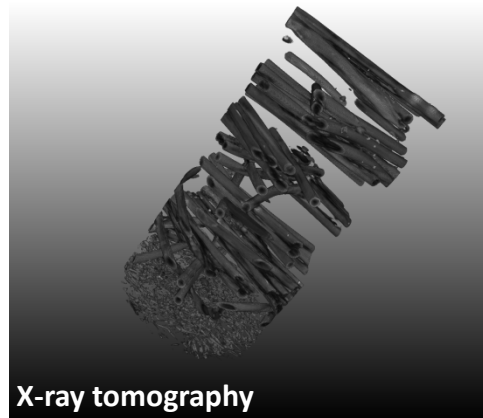


PRISMA : Radiation interactions with matter and applications

- + Ion beam analysis
- + New tools for radiobiology
- + Non-destructive testing



Ion Beam Analysis



X-ray tomography



+ Safety and high value-added materials :

- × Aeronautics
- × Civil engineering
- × Energy
- × ...

Roadway inspection



Toward composite planes



Laser ultrasonics



Infrared thermography

Concrete NDT



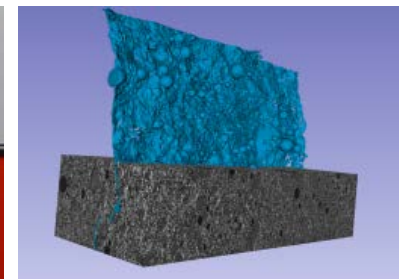
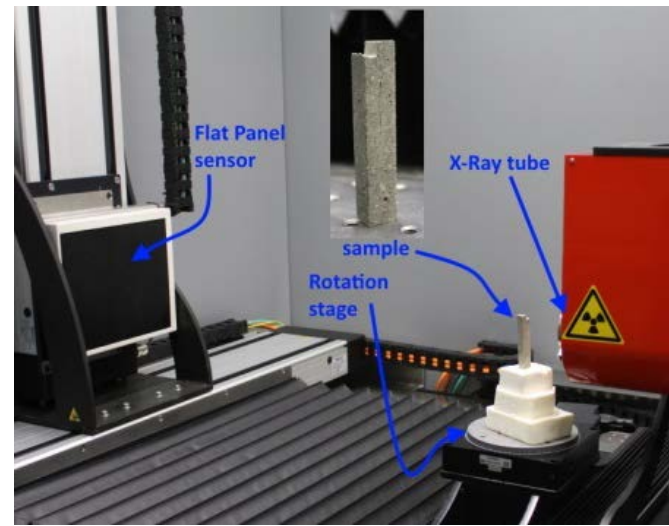
PRISMA : X-ray tomography

+ X-ray microtomograph

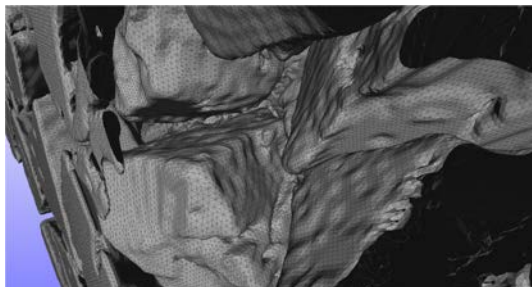
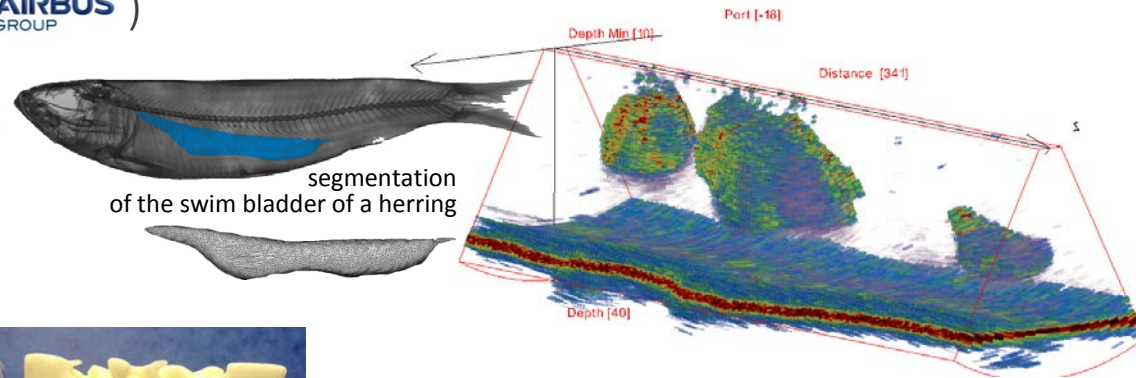
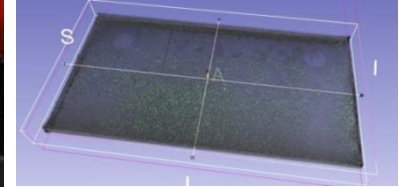
- × spatial resolution down to $4\mu\text{m}$
- × Large object up to $\sim 1\text{m}^2$

+ Example of projects

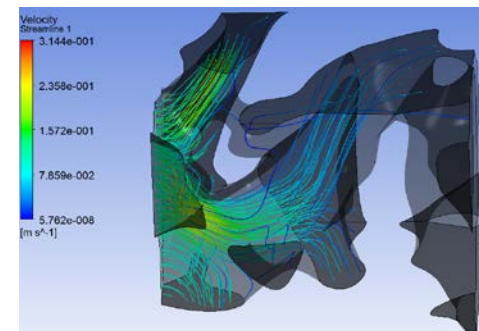
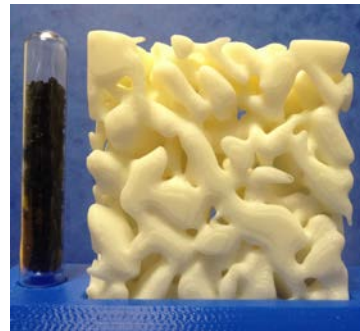
- × cracks in concrete ( IFSTAR)
- × porosity in composite materials ( AIRBUS GROUP)
- × TOMOFISH ( Ifremer)
- × Microstructures ( DGA)



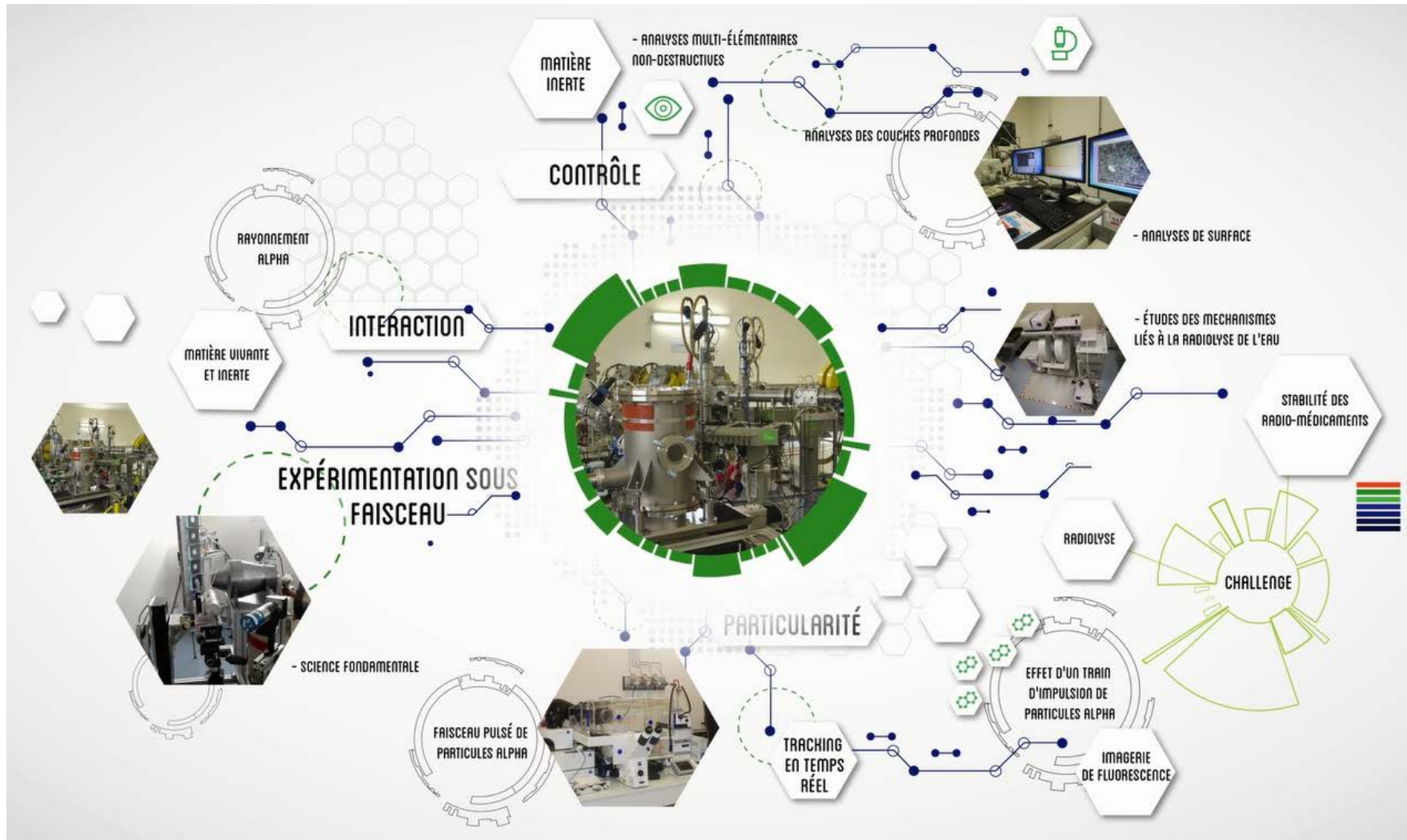
segmentation of a crack in concrete
porosity in carbon composite plate

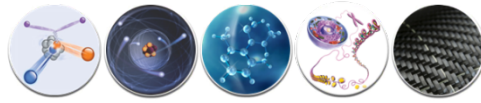


Granular activated carbon filter imaging,
digital and real upscaled 3D mock-up



+ <http://www.cyclotron-nantes.fr/>





Physics of Radiation InteractionS with Matter and Applications

- + Nuclear physics for medicine
- + Non-destructive testing
- + Associated research centers and platforms



+ Main collaborations

- × CRCNA, GEM, LAUM, IFSTTAR, CEREMA, IFREMER,...
- × MEDICIS (CERN), INR TROISK, INFN Ferrara, ...
- × AIRBUS, EADS IW, AAA, LEMER PAX, KEOSYS,...
- × In discussion: LPC Caen, IPHC/Cyrce, IPN Lyon, SPIRAL 2, ...
- × Contacts: A. Denker (HZB, Berlin), E. Fritsch (IMN Jean Rouxel), A. Koning (NRG Petten/IAEA), F. Mathis (U. Liège), C2RMF/AGLAE (Louvre Museum), AIEA, NUPECC,...

STAFF (June, 2017)

+ Permanent

Xavier de la BERNARDIE (IR IMT)

Arnaud GUERTIN (CR CNRS)

Férid HADDAD (Pr UN, HDR)

Elisabeth LYS (MA IMT)

Vincent METIVIER (Pr IMT, HDR)

Ahmed RAHMANI (MC UN)

Noël SERVAGENT (MA IMT)

Thomas SOUNALET (CR CNRS)

+ Associated

Charbel KOUMEIR (IR GIP ARRONAX)

+ PhD Students

Alexandre SUBERCAZE, IMT (2017)

Maddalena MAIETTA, ITN Promed (2018)

Roberto FORMENTO, ITN Promed (2019)

Etienne NIGRON, CNRS/PdL (2019)